

## Normal Forms for Underactuated Mechanical Systems with Symmetry

Reza Olfati-Saber

*Abstract*— In this paper, we introduce cascade normal forms for underactuated mechanical systems that are convenient for control design. These normal forms include three classes of cascade systems, namely, nonlinear systems in strict feedback form, feedforward form, and nontriangular quadratic form (to be defined). In each case, the transformation to cascade systems is provided in closed-form. We apply our results to the Acrobot, the Rotating Pendulum, and the Cart-Pole system.

*Keywords*— Underactuated systems, normal forms, symmetry, nonlinear control, cascade systems

### I. INTRODUCTION

Underactuated Systems are mechanical control systems with fewer controls than configuration variables. In recent years, there has been extensive interest among the researchers in control of underactuated mechanical systems due to their broad applications (see [1], [2] and references therein). Many real-life control systems including aircraft, spacecraft, helicopters, underwater vehicles, surface vessels, mobile robots, walking robots, and flexible-link robots are examples of underactuated systems.

In this paper, we introduce three classes of cascade normal forms for underactuated systems. Namely, cascade nonlinear systems in *strict feedback form*, *feedforward form*, and *nontriangular quadratic form*. The structure of these normal forms allows application of the existing control design methods like *backstepping* [3] and *forwarding* [4] to control of underactuated systems. In addition, the need for developing effective control design methods for nonlinear systems in nontriangular forms as in [5], [6] becomes more evident.

The main contribution of this paper is to provide diffeomorphisms in closed-form that transform classes of underactuated systems with symmetry into cascade systems with structural properties. These transformations are physically meaningful and all of them are obtained from the Lagrangian functions of the original underactuated systems. Appropriate references are provided for control design methods associated with each obtained class of cascade normal forms.

The outline of the paper is as follows. In section II, the dynamics and partial feedback linearization methods for underactuated systems are presented. In section III, we present our main results on cascade normal forms for low-order underactuated systems. In section IV, applications of our theoretical results to three robotics benchmark examples are given. Finally, concluding remarks are made.

R. Olfati-Saber is with the Department of Control and Dynamical Systems, California Institute of Technology, 1200 E. California Blvd., M/C 107-81, Pasadena, CA 91125, Phone: (626) 395-3371, Fax: (626) 796-8914, E-mail: olfati@cds.caltech.edu .

### II. DYNAMICS OF UNDERACTUATED SYSTEMS

In this paper, we consider mechanical systems with configuration vector  $q \in Q$  which is an  $n$ -dimensional vector and a (simple) Lagrangian

$$\mathcal{L}(q, \dot{q}) = K - V = \frac{1}{2} \dot{q}^T M(q) \dot{q} - V(q)$$

where  $K$  is the kinetic energy,  $V(q)$  is the potential energy, and  $M(q)$  is the *inertia matrix* of the system. Let us decompose the configuration vector of the system as  $q = \text{col}(q_1, q_2) \in Q_1 \times Q_2$  where the dimension of the manifold  $Q_i$  is denoted by  $n_i = \dim(Q_i)$  for  $i = 1, 2$  and  $n_1 + n_2 = n$  ("col" means a column vector). The Euler-Lagrange equations of motion for this system can be written in the form

$$\begin{aligned} \frac{d}{dt} \frac{\partial \mathcal{L}}{\partial \dot{q}_1} - \frac{\partial \mathcal{L}}{\partial q_1} &= \tau_1 \\ \frac{d}{dt} \frac{\partial \mathcal{L}}{\partial \dot{q}_2} - \frac{\partial \mathcal{L}}{\partial q_2} &= \tau_2 \end{aligned} \quad (1)$$

where  $\tau_i$ 's are the control inputs satisfying the conditions of either of the following *actuation modes*:

A1)  $\tau = \tau_2 \in \mathbb{R}^{n_2}$  is the control and  $\tau_1 \equiv 0$ .

A2)  $\tau = \tau_1 \in \mathbb{R}^{n_1}$  is the control and  $\tau_2 \equiv 0$ .

Apparently, in both of the above cases system (1) is an underactuated system. Actuation modes A1 and A2 are important due to their applications in robotics. The Acrobot (Fig. 1) is actuated according to mode A1, while the Rotating Pendulum (Fig. 2) and the Cart-Pole system are actuated according to mode A2.

The equations in (1) can be simplified as

$$\begin{aligned} m_{11}(q) \ddot{q}_1 + m_{12}(q) \ddot{q}_2 + h_1(q, \dot{q}) &= \tau_1 \\ m_{21}(q) \ddot{q}_1 + m_{22}(q) \ddot{q}_2 + h_2(q, \dot{q}) &= \tau_2 \end{aligned} \quad (2)$$

where  $h_i$ 's contain Coriolis, centrifugal, and gravity terms. Due to Spong [2], [7], there exists an invertible change of control input

$$\tau_i = \alpha_i(q)u + \beta_i(q, \dot{q}), \quad i = 1, 2 \quad (3)$$

which transforms the dynamics of (2) into

$$\begin{aligned} \dot{q}_1 &= p_1 \\ \dot{p}_1 &= f(q, p) + g(q)u \\ \dot{q}_2 &= p_2 \\ \dot{p}_2 &= u \end{aligned} \quad (4)$$

where for case A1,  $f(q, p), g(q)$  are given by

$$\begin{aligned} f(q, p) &:= -m_{11}^{-1}(q)h_1(q, \dot{q}) \\ g(q) &:= -m_{11}^{-1}(q)m_{12}(q) \end{aligned} \quad (5)$$

In a similar way, expressions for  $f, g$  can be obtained for case A2. The corresponding partially-linearizing change of control in (3) for A1 and A2 are called *collocated feedback* and *noncollocated feedback*, respectively [2], [7]. Notice that (4) is not a cascade nonlinear system. In [8], an algebraic

sufficient condition is provided for the existence of a global change of coordinates that transforms system (4) into a cascade nonlinear system in the form

$$\begin{aligned} \dot{z}_1 &= z_2 \\ \dot{z}_2 &= F(z, \xi_1, \xi_2) \\ \dot{\xi}_1 &= \xi_2 \\ \dot{\xi}_2 &= u \end{aligned} \quad (6)$$

The main contribution of this work is to provide this transformation in closed-form for classes of underactuated systems with symmetry properties as defined in the following.

*Definition 1.* (shape variables) The set of configuration variables that appear in the inertia matrix  $M(q)$  are called *shape variables*. In other words, if  $M(q) = M(q_2)$ , then  $q_2$  is the vector of shape variables of the system. (See [9] for formal definitions of the notions of “shape space” and “symmetry” on manifolds).

### III. CASCADE NORMAL FORMS

This section is devoted to normal forms with triangular and nontriangular structural properties for classes of underactuated systems with symmetry.

*Theorem 1.* Consider the underactuated system in (2) with two degrees of freedom  $(q_1, q_2)$  and symmetry property  $M(q) = M(q_2)$ . Assume the shape variable  $q_2$  is actuated (i.e. case A1). Then, the following global change of coordinates

$$\begin{aligned} z_1 &= q_1 + \gamma(q_2) \\ z_2 &= m_{11}(q_2)p_1 + m_{12}(q_2)p_2 := \partial\mathcal{L}/\partial\dot{q}_1 \\ \xi_1 &= q_2 \\ \xi_2 &= p_2 \end{aligned} \quad (7)$$

transforms the dynamics of (2) into a cascade nonlinear system in strict feedback form

$$\begin{aligned} \dot{z}_1 &= m_{11}^{-1}(\xi_1)z_2 \\ \dot{z}_2 &= g(z_1, \xi_1) \\ \dot{\xi}_1 &= \xi_2 \\ \dot{\xi}_2 &= u \end{aligned} \quad (8)$$

where

$$\gamma(q_2) = \int_0^{q_2} \frac{m_{12}(s)}{m_{11}(s)} ds \quad (9)$$

$$g(z_1, \xi_1) = -[D_{q_1}V(q_1, q_2)]_{q_1=z_1-\gamma(\xi_1), q_2=\xi_1} \quad (10)$$

*Proof:* By definition of  $z_1$  and  $z_2$ ,  $\dot{z}_1 = z_2/m_{11}(q_2)$ . Since  $M(q) = M(q_2)$ ,  $\partial K/\partial q_1 = 0$  and we have

$$\dot{z}_2 = \frac{d}{dt} \frac{\partial\mathcal{L}}{\partial\dot{q}_1} = \frac{\partial\mathcal{L}}{\partial q_1} = \frac{\partial K}{\partial q_1} - \frac{\partial V(q)}{\partial q_1} = g(z_1, \xi_1) \quad (11)$$

and thus the result follows.  $\square$

*Remark 1.* Clearly,  $z_2$  in (7) is the generalized momentum conjugate to  $q_1$ . In addition,  $z_1$  can be viewed as a new generalized configuration variable replacing  $q_1$ . This means

that the change of coordinates given in (7) is physically meaningful.

The control input for the  $z$ -subsystem of the normal form (8) is the shape variable  $q_2 = \xi_1$ . If there exists a state feedback  $\xi_1 = k_1(z)$  that renders  $z = 0$  globally asymptotically stable (GAS), then using backstepping procedure [3], [10] a state feedback  $u = k_2(z, \xi)$  can be obtained that renders  $(z, \xi) = 0$  GAS for the composite system in (8). Global asymptotic stabilization of the  $z$ -subsystem of (8) using a static state feedback is addressed in [11].

The following theorem gives the normal form for underactuated systems with 2 d.o.f. and actuation mode A2.

*Theorem 2.* Consider the underactuated system in (2) with two degrees of freedom  $(q_1, q_2)$  and symmetry property  $M(q) = M(q_2)$ . Assume the shape variable  $q_2$  is unactuated (i.e. case A2). Then, the following global change of coordinates

$$\begin{aligned} z_1 &= q_1 + \gamma(q_2) \\ z_2 &= m_{21}(q_2)p_1 + m_{22}(q_2)p_2 := \partial\mathcal{L}/\partial\dot{q}_2 \\ \xi_1 &= q_2 \\ \xi_2 &= p_2 \end{aligned} \quad (12)$$

over the set  $U = \{q_2 \mid m_{21}(q_2) \neq 0\}$  transforms the dynamics of (2) into a cascade nonlinear system in nontriangular quadratic normal form

$$\begin{aligned} \dot{z}_1 &= m_{21}^{-1}(\xi_1)z_2 \\ \dot{z}_2 &= g(z_1, \xi_1) + \Sigma(\xi_1, z_2, \xi_2) \\ \dot{\xi}_1 &= \xi_2 \\ \dot{\xi}_2 &= u \end{aligned} \quad (13)$$

where

$$\Sigma(\xi_1, z_2, \xi_2) = (z_2, \xi_2)\pi(\xi_1)(z_2, \xi_2)^T \quad (14)$$

is quadratic in  $(z_2, \xi_2)$  with a weight matrix  $\pi(\xi_1) \in \mathbb{R}^{2 \times 2}$  and

$$\gamma(q_2) = \int_0^{q_2} \frac{m_{22}(s)}{m_{21}(s)} ds \quad (15)$$

$$g(z_1, \xi_1) = -[D_{q_2}V(q_1, q_2)]_{q_1=z_1-\gamma(\xi_1), q_2=\xi_1} \quad (16)$$

*Proof:* The proof is rather similar to the proof of Theorem 1 with the difference that  $\partial K/\partial q_2 =: \Sigma(\xi_1, z_2, \xi_2)$ .  $\square$

*Remark 2.* Stabilization of special classes of nonlinear systems in nontriangular normal form (13) is addressed in [5], [6]. In this case, backstepping/forwarding approaches are not applicable.

The following theorem shows that under further assumptions on the class of underactuated systems with an unactuated shape variable, the obtained normal form is a nonlinear system in feedforward form [12].

*Theorem 3.* Assume all the conditions in Theorem 2 hold. Denote  $g(q_1, q_2) = -D_{q_2}V(q_1, q_2)$ . Suppose the following properties hold:

i)  $m_{11}$  is constant.

ii)  $g(q_1, q_2) = g(q_2)$ , i.e.  $D_{q_1} D_{q_2} V(q) \equiv 0$ .  
 iii)  $\psi(q_2) = g(q_2)/m_{21}(q_2)$  satisfies  $\psi'(0) \neq 0$ .  
 Then, applying the change of coordinates

$$y_1 = z_1, y_2 = z_2/m_{21}(q_2) \quad (17)$$

transforms system (13) into a cascade nonlinear system in strict feedforward form

$$\begin{aligned} \dot{y}_1 &= y_2 \\ \dot{y}_2 &= \psi(\xi_1) + \pi(\xi_1)\xi_2^2 \\ \dot{\xi}_1 &= \xi_2 \\ \dot{\xi}_2 &= u \end{aligned} \quad (18)$$

with  $\pi : \mathbb{R} \rightarrow \mathbb{R}$ . Moreover, the origin for this feedforward system can be globally asymptotically stabilized using Teel's nested saturations (see [12]).

*Proof:* See the proof of proposition 4.1 in [8].  $\square$

#### IV. EXAMPLES

In this section, we provide examples of underactuated systems with their corresponding normal form.

*Example 1.* The *Acrobot* [13], as shown in Fig. 1, is a two-link planar robot with revolute joints and one actuator at the elbow. The inertia matrix for the Acrobot is given by

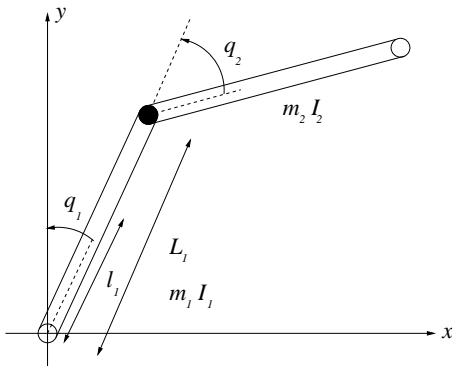


Fig. 1. The Acrobot

$$\begin{aligned} m_{11} &= m_1 l_1^2 + m_2 (L_1^2 + l_2^2 + 2L_1 l_2 \cos(q_2)) \\ &+ I_1 + I_2 =: a + b \\ \cos(q_2) \\ m_{12} &= m_{21}(q_2) = m_2 (l_2^2 + L_1 l_2 \cos(q_2)) + I_2 \\ &=: c + (b/2) \\ \cos(q_2) \\ m_{22} &= m_2 l_2^2 + I_2 =: c \end{aligned}$$

Clearly, the symmetry condition  $M(q) = M(q_2)$  holds and  $q_2$  is an actuated shape variable for the Acrobot. Therefore, based on Theorem 1 after applying the global change of coordinates in (7), the dynamics of the Acrobot transforms into a cascade system in strict feedback form

$$\begin{aligned} \dot{z}_1 &= z_2/m_{11}(q_2) \\ \dot{z}_2 &= -(m_1 l_1 + m_2 L_1)g_0 \cos(z_1 - \gamma(q_2)) \\ &- m_2 l_2 g_0 \cos(z_1 - \gamma(q_2) + q_2) \\ \dot{q}_2 &= p_2 \\ \dot{p}_2 &= u \end{aligned} \quad (19)$$

where  $g_0$  is the gravity constant and the function  $\gamma(\cdot)$  is given by

$$\gamma(q_2) = \frac{q_2}{2} + \frac{(2c - a)}{\sqrt{a^2 - b^2}} \arctan\left(\sqrt{\frac{a - b}{a + b}} \tan\left(\frac{q_2}{2}\right)\right) \quad (20)$$

which is defined over  $q_2 \in [-\pi, \pi]$  and  $a, b, c > 0$  are three constants that determine  $M(q)$ . See [5], [11] for further details on control of the Acrobot.

*Example 2.* The *Rotating Pendulum*, depicted in Fig. 2, consists of an inverted pendulum on a rotating arm [14]. The elements of the inertia matrix for the Rotating Pendulum are given by

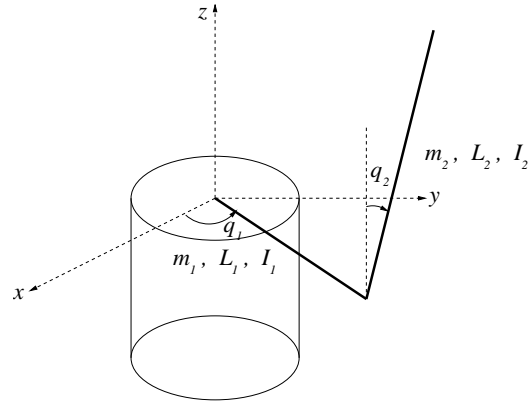


Fig. 2. The Rotating Pendulum

$$\begin{aligned} m_{11} &= I_1 + m_1 l_1^2 + m_2 (L_1^2 + l_2^2 \sin^2(q_2)) \\ &=: a + d \sin^2(q_2) \\ m_{12} &= m_{21} = m_2 L_1 l_2 \cos(q_2) =: b \cos(q_2) \\ m_{22} &= I_2 + m_2 l_2^2 =: c \end{aligned}$$

The potential energy for this system is

$$V(q_1, q_2) = m_2 g l_2 \cos(q_2)$$

Apparently,  $M(q) = M(q_2)$  and  $q_2$  is an unactuated shape variable for the rotating pendulum. Based on Theorem 2, the dynamics of the rotating pendulum can be transformed into a nontriangular quadratic normal form using the change of coordinates (12) for  $q_2 \in U = (-\pi/2, \pi/2)$ . After setting  $y_1 = z_1, y_2 = z_2/m_{21}(q_2)$ , we obtain

$$\begin{aligned} \dot{y}_1 &= y_2 \\ \dot{y}_2 &= \frac{g}{L_1} \tan(q_2) + \frac{l_2}{L_1} \sin(q_2) \left( u_2 - \frac{m_{22}}{m_{21}(q_2)} p_2 \right)^2 \\ &+ \frac{m_{22}}{m_{21}(q_2)} \tan(q_2) p_2^2 \\ \dot{q}_2 &= p_2 \\ \dot{p}_2 &= u \end{aligned} \quad (21)$$

where

$$\begin{aligned} y_1 &= q_1 - \gamma(q_2) \\ y_2 &= p_1 - m_{21}^{-1}(q_2) m_{22}(q_2) p_2 \end{aligned}$$

and

$$\gamma(q_2) = \frac{(m_2 l_2^2 + I_2)}{m_2 l_2 L_1} \log \left( \frac{1 + \tan(q_2/2)}{1 - \tan(q_2/2)} \right) \quad (22)$$

*Example 3.* The *Cart-Pole System* is an inverted pendulum on a cart. Let  $(q_1, q_2)$  denote the position of the cart and the angle of the pendulum, respectively. The inertia matrix for the cart-pole system is similar to the rotating pendulum with the difference that  $m_{11}$  is constant. In addition, the cart-pole system satisfies all other conditions of Theorem 3 over the upper half-plane (i.e.  $q_2 \in (-\pi/2, \pi/2)$ ). Thus, the origin  $(q, p) = (0, 0)$  for the cart-pole system can be globally asymptotically stabilized over the upper half-plane using Teel's nested saturations [5], [8].

## V. CONCLUSION

In this paper, we introduced novel structured cascade normal forms for underactuated systems. Namely, cascade systems in strict feedback form, feedforward form, and non-triangular quadratic form. The corresponding control design methods and examples for each class are mentioned. These normal forms allow application of the existing methods like backstepping and feedforwarding to control of complex underactuated systems. We also introduced fourth-order cascade normal forms for three robotics benchmark examples. Namely, the Acrobot, the Rotating Pendulum, and the Cart-Pole system.

## ACKNOWLEDGEMENT

The author would like to thank Alexandre Megretski for our discussions on the subject of this paper and appreciate the constructive suggestions of the reviewers.

## REFERENCES

- [1] M. Reyhanoglu, A. van der Schaft, N. H. McClamroch, and I. Kolmanovskiy, "Dynamics and control of a class of underactuated mechanical systems," *IEEE Trans. on Automatic Control*, vol. 44, no. 9, pp. 1663–1671, 1999.
- [2] M. W. Spong, "Underactuated mechanical systems," in *Control Problems in Robotics and Automation*, B. Siciliano and K. P. Valavanis, Ed., Springer-Verlag, London, UK, 1997.
- [3] M. Krstić, I. Kanellakopoulos, and P. Kokotović, *Nonlinear and Adaptive Control Design*, John Wiley & Sons, 1995.
- [4] F. Mazenc and L. Praly, "Adding integrations, saturated controls, and stabilization for feedforward Systems," *IEEE Trans. on Automatic Control*, vol. 40, pp. 1559–1578, 1996.
- [5] R. Olfati-Saber, *Nonlinear Control of Underactuated Mechanical Systems with Application to Robotics and Aerospace Vehicles*, Ph.D. thesis, Massachusetts Institute of Technology, Department of Electrical Engineering and Computer Science, February 2001, <http://www.cds.caltech.edu/~olfati>.
- [6] R. Olfati-Saber, "Fixed point controllers and stabilization of the cart-pole system and the rotating pendulum," *Proc. of the 38th Conf. on Decision and Control*, vol. 2, pp. 1174–1181, Phoenix, AZ, Dec. 1999.
- [7] M. W. Spong, "Energy based control of a class of underactuated mechanical systems," *1996 IFAC World Congress*, July 1996.
- [8] R. Olfati-Saber, "Cascade normal forms for underactuated mechanical systems," *Proc. of the 39th Conf. on Decision and Control*, vol. 3, pp. 2162–2167, Sydney, Australia, Dec. 2000.
- [9] J. E. Marsden and T. S. Ratiu, *Introduction to Mechanics and Symmetry*, Springer, 1999.
- [10] A. Isidori, *Nonlinear Control Systems*, Springer, 1995.
- [11] R. Olfati-Saber, "Control of underactuated mechanical systems with two degrees of freedom and symmetry," *Proc. of American Control Conference*, vol. 6, pp. 4092–4096, Chicago, IL, June 2000.
- [12] A. R. Teel, "Using Saturation to stabilize a class of single-input partially linear composite systems," *IFAC NOLCOS'92 Symposium*, pp. 369–374, June 1992.
- [13] M. W. Spong, "The swing up control problem for the acrobot," *IEEE Control Systems Magazine*, vol. 15, pp. 49–55, 1995.
- [14] K. J. Astrom and K. Furuta, "Swinging up a pendulum by energy control," *IFAC*, San Francisco, 1996.